

17W AR111 MODULE

DATASHEET



Features

- Interchangeable Optical Systems
- Superior Light Quality
- Long Lifetime
- Ecologically Friendly
- High Efficiency

17W AR111 MODULE DATASHEET

www.edison-opto.com

General Information	1
Product Dimensions	2
Product Information	3
Technical Data	3
Light Patterns	4
Applications	5
Assembly Instructions and Recommended Driver Specification	6
Accessories	6
Product Safety	8
Package Information	9
Revision History	9
About Edison Opto	10



17W AR111 MODULE DATASHEET



General Information

Introduction

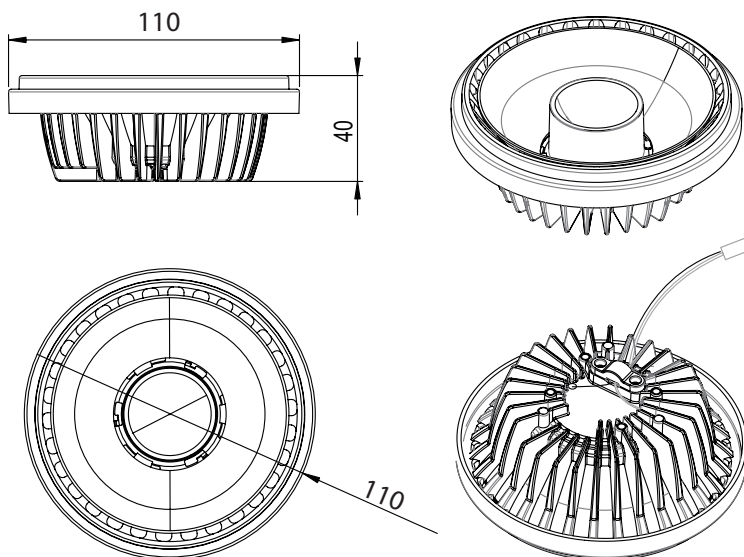
Edison Opto 17W AR111 Module series, with a COB LED, creates a high luminous efficacy and long life expectancy lighting source. The superior light quality is achieved by integrating condense light emitting area with an advanced optical design.

The unit is designed to offer lighting designers and users a direct replacement lamp in Edison LED power from conventional halogen lamps. As for the flexibility of illuminated area, the module is offered in four types of reflectors in order to provide four options of beam angles for different scenes. Moreover, the reflectors can be replaced by users easily.

Furthermore, the promising efficiency makes Edison Opto 17W AR111 Module the best choice for a wide variety of general illumination, task and accent lighting applications.



Product Dimensions



Unit: mm
Tolerance: ± 2.5 mm

Wire : L20 cm \times AWG20
Connector : H7625R1-02
Wire UL Number : UL 1007

Product Information

Product Type						Product Order Code			
17W AR111 Module						7-AR11-08			

Product Specification									
WATT		COLOR		BEAM ANGLE		DRIVER		CRI	
Code	Type	Code	Type	Code	Type	Code	Type	Code	Type
17	17W	40	NW (4000K)	1	10~19	0	No Driver	80	CRI80
		30	WW (3000K)	2	20~29	C	Ex-Driv DIM	90	CRI90
		27	WW (2700K)	3	30~39				
				6	60~69				

COVER		TYPE		BASE	
Code	Type	Code	Type	Code	Type
S0	Sliver	ST	Standard	00	No Base

Note:

Available selection of Color, Beam angle, Driver and CRI.

Technical Data

Parameter	Rating / Value	Units
Power Consumption	17	W
Color Temperature	4000/ 3000/ 2700	K
DC Input Voltage	36	V
CRI	≥80/ ≥90	--
Weight	180	g
Operating Temperature	-20 ~ +40	°C
Storage Temperature	-40 ~ +60	°C

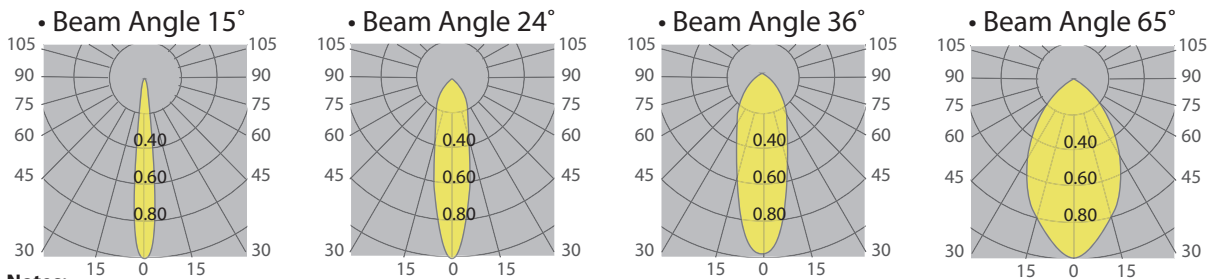
Notes

1. The Operating temperature is based on the ambient temperature to the heatsink in 5 cm distance.
2. Power consumption has ±10% tolerance.
3. Color rendering index (CRI) is measured with accuracy in minimum.
4. Weight has ±5g tolerance.

17W AR111 MODULE DATASHEET

Product Information / Light Patterns

Power Consumption (W)	CRI	Beam Angle	Color	Color Temperature	Typ. Flux (lm)	Typ. Lux @1m (lx)
17W	80	15°	Neutral White	4000K	1850	10000
			Warm White	3000K	1750	9000
			Warm White	2700K	1700	8700
		24°	Neutral White	4000K	1850	4400
			Warm White	3000K	1750	4150
			Warm White	2700K	1700	4050
		36°	Neutral White	4000K	1850	2500
			Warm White	3000K	1750	2300
			Warm White	2700K	1700	2200
		65°	Neutral White	4000K	1850	1400
			Warm White	3000K	1750	1300
			Warm White	2700K	1700	1250
	90	15°	Neutral White	4000K	1650	8500
			Warm White	3000K	1550	7700
			Warm White	2700K	1500	7400
		24°	Neutral White	4000K	1650	4100
			Warm White	3000K	1550	4000
			Warm White	2700K	1500	3800
		36°	Neutral White	4000K	1650	2300
			Warm White	3000K	1550	2100
			Warm White	2700K	1500	2000
		65°	Neutral White	4000K	1650	1200
			Warm White	3000K	1550	1100
			Warm White	2700K	1500	1000



- Notes:**
- 1. LED is a dynamic and constantly evolving technology. The final lux output of your 17W AR111 Module may vary.
 - 2. Angle has $\pm 5^\circ$ tolerance.

Applications

Retail Stores
Ceiling fixture
Accent Lighting
Restaurant,
Hotel lobby
Hallway
galleries, exhibitions and museums

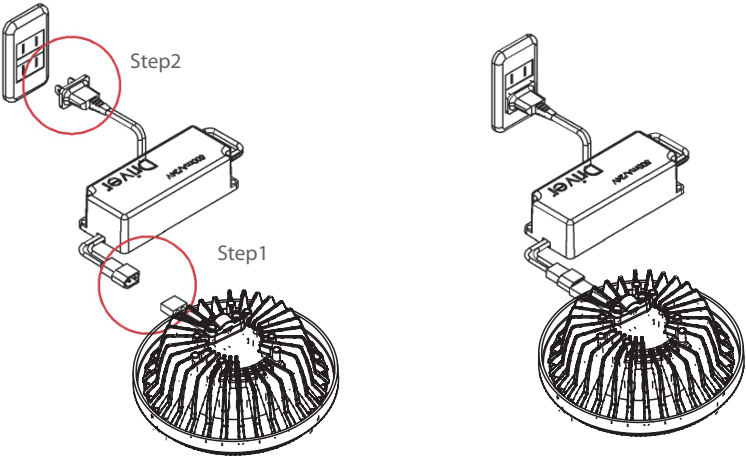


17W AR111 MODULE DATASHEET

www.edison-opto.com

Assembly Instructions and Recommended Driver Specification

Input Voltage	Output Voltage	Operating Current (Constant)	Rated Power
AC 100~270V	DC32~40V	500mA	20W

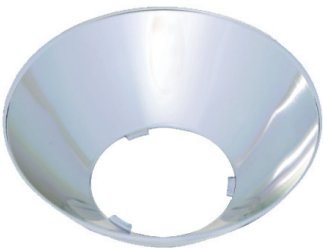


- Assembly Instructions:**
1. Connect the 17W AR111 Module to the DC driver shown as step 1.
 2. Plug the driver to AC outlet shown as step 2.

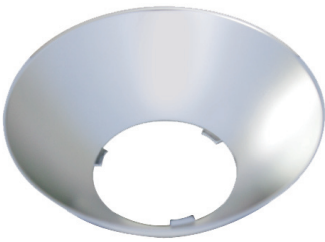
Caution:
Never plug the driver to AC outlet before the 17W AR111 Module is properly connected, otherwise it may damage the LEDs permanently.

Note:
Rated power data depends on the driver selection.

Accessories



Beam Angle / 15°



Beam Angle / 24°



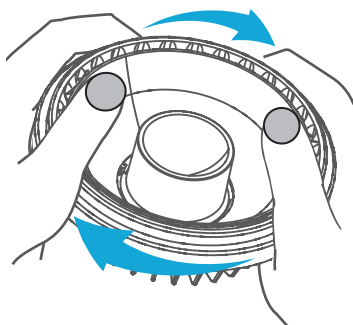
Beam Angle / 36°



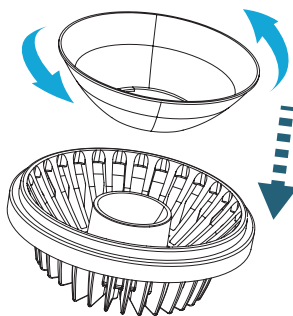
Beam Angle / 65°

- Notes:**
- Beam Angle 15° reflector has shiny surface.
 - Beam Angle 24° reflector has matte surface.
 - Beam Angle 36° reflector has smooth curve and lattice optics patterns.
 - Beam Angle 65° reflector provide the surface with bended curve and lattice patterns

Interchange of reflector

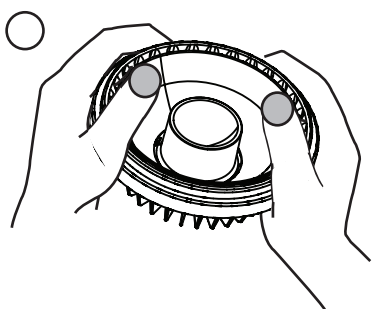


Wear gloves during installation.
Interchange another reflector with
different angle. Clockwise loose the
reflector.

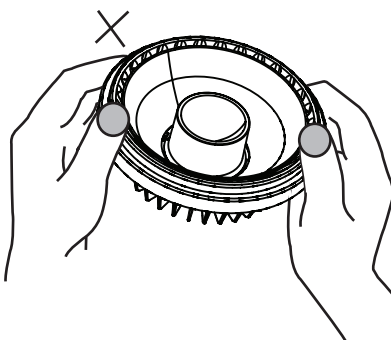


Put the other reflector on module
and counter-clockwise tight the
reflector.

Notice



√ Correct



X incorrect

Product Safety



WARNING

Risk of Electrical Shock, Injury, and damage

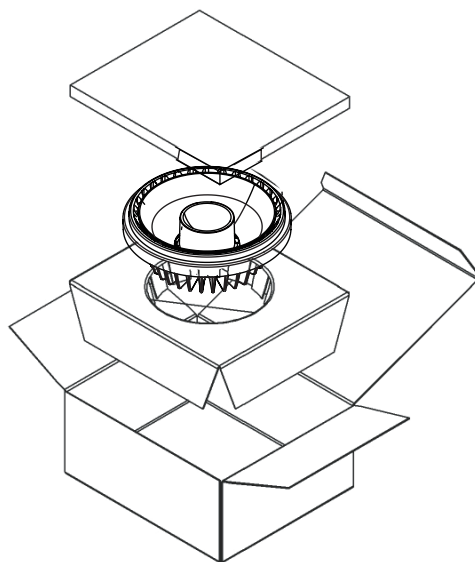
- √ Disconnect or turn off power before servicing or installing luminaire.
- √ Do not hot swap! LED heat sink module must not to be disconnected with line power on failure to do so may damage product.
- √ Installation of LED product (with driver) needs to be made with regard to all applicable electrical and safety standards. Only qualified personnel should be allowed to perform installations.
- √ Verify that supply voltage is correct by comparing it with the luminaire and driver.
- √ All wiring connections should be capped with UL approved recognized wire connectors.
- √ The luminaire shall, under no circumstance, be covered with thermal insulation matting or similar material, and pay attention not to exceed the maximum operation temperature of LED module.
- √ If the IP rating of the fixture should be higher than IP20, the design of the housing should be according to the IP standards in the application.
- √ The LED module itself and all its components must not be mechanically stressed.
- √ Assembly must not damage or destroy conducting paths on the circuit board.
- √ Be aware of, the luminaire is intended for indoor application and keep away from any chemicals



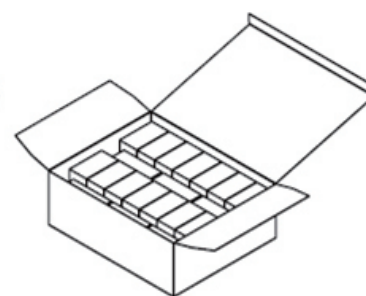
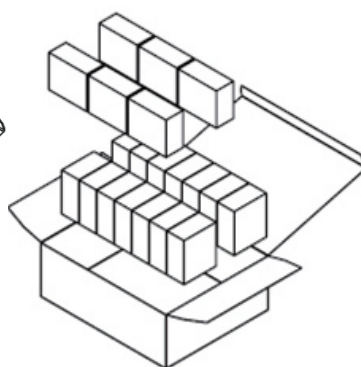
CAUTION

- √ Avoid direct eye exposure to the light source while it is on.
- √ Wear safety glasses and gloves during installation and servicing.
- √ Allow lamp/fixture to cool before handling. Do NOT touch enclosure or light source.
- √ Follow all manufacturers' warnings, recommendations and restrictions for : driver type, burning position, mounting location/methods, and replacement.

Package Information



1 Pc/1 Pack



20 Packs/ Carton

Notes :

1. Pack Dimensions : 158mm(length)*134mm(width)*71mm(height)
2. Carton Dimensions : 530mm(length)*425mm(width)*195mm(height)

Revision History

Versions	Description	Release Date
1	Establish order code information	2013/08/19
2	1. Revise Driver specification 2. Add CRI Information 3. Update the application picture 4. Revise the value of Typ. Lux	2014/03/21
3	1. Establish a New Version 2. Revise Application 3. Add Accessory information & Product Safety	2014/08/25

About Edison Opto

Edison Opto is a leading manufacturer of high power LED and a solution provider experienced in LDMS. LDMS is an integrated program derived from the four essential technologies in LED lighting applications- Thermal Management, Electrical Scheme, Mechanical Refinement, Optical Optimization, to provide customer with various LED components and modules. More Information about the company and our products can be found at www.edison-opto.com

Copyright©2014 Edison Opto. All rights reserved. No part of publication may be reproduced or transmitted in any form or by any means, electronic or mechanical, including photo copy, recording or any other information storage and retrieval system, without prior permission in writing from the publisher. The information in this publication are subject to change without notice.



For general assistance please contact:
service@edison-opto.com.tw

For technical assistance please contact:
LED.Detective@edison-opto.com.tw