

7W MR16 HR Module Datasheet



Features :

- Solid State Lighting Technology
- Superior Light Quality
- Reduce CO₂ Emission
- Energy Saving (7W)
- Ecologically Friendly

Table of Contents

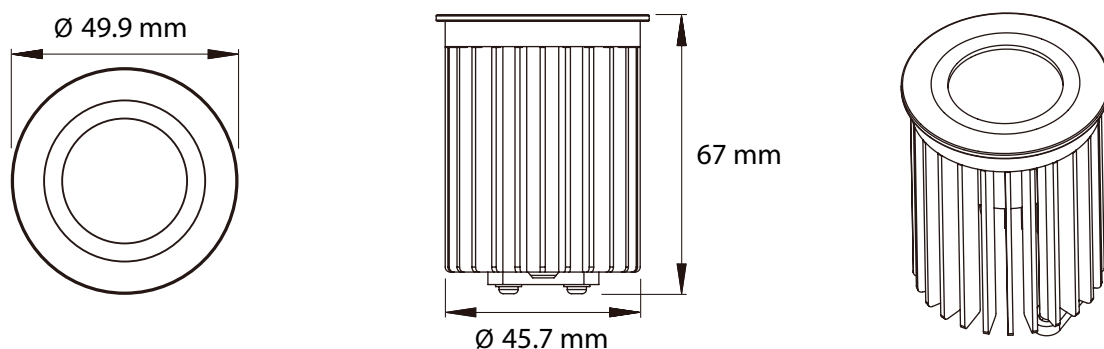
General Information.....	3
Product Dimensions.....	3
Light Patterns.....	3
Product Information.....	4
Technical Data	4
Assembly Instructions and Recommended Driver Specification	5
Applications	6
Environmentally Friendly	7
Package Information.....	8
Revision History	9
About Edison Opto	9

General Information

Introduction

Edison Opto. MR16 uses high brightness LED which provides a superior illuminance. It is ideal for using in tracks, rails, and pendants in exhibit, architectural and residential applications. Furthermore, the multi- selection on various colors offers a great experience in decorative and mood lighting applications.

Product Dimensions

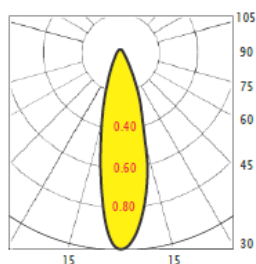


7W MR16 HR Module dimensions.

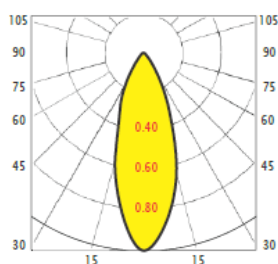
Tolerance: $\pm 1/8"$ [2.5 mm]

Light Patterns

• Beam Angle 25°



• Beam Angle 35°



7W MR16 HR Module light pattern.

Product Information

Product Type								Product Order Code					
7W MR16 HR Module								7-MD16-01					
Product Description													
ES_WALT		ES_COLOR		ES_ANGLE		ES_DRIVER		ES_EMITTER		ES_COVER		ES_BASE	
Code	Type	Code	Type	Code	Type	Code	Type	Code	Type	Code	Type	Code	Type
07	7W	60	CW (6000K)	2	20~29	0	No Driver	HR1	EdiPower II HR	S0	Silver	00	No Base
		40	NW (4000K)	3	30~39								
		30	WW (3000K)										

Note:

Available selection of color and angle.

Technical Data

Parameter	Symbol	Rating / Value	Units
Power Consumption	--	7	W
Color Temperature	--	6000/4000/3000	K
Color	--	Cool White Neutral White Warm White	--
DC Input Voltage	V	18~22	V
CRI	--	90	--
Weight	--	82 ± 5	g
Base	--	No Base	--
Operating Temperature	T _{opr}	-20 ~ +40	°C
Storage Temperature	T _{stg}	-40 ~ +60	°C

Notes:

1. Power consumption has 10% tolerance.
2. The operating temperature is based on the ambient temperature to the heatsink in 5 cm distance.

Power Consumption(W)	Beam Angle	Field Angle	Color	Typ. Lux @1m (lx)	Typ. Flux (lm)
7W	25°	60°	Cool White	1750	550
			Neutral White		
			Warm White		
	35°	70°	Cool White	1300	
			Neutral White		
			Warm White		

7W MR16 HR Module illuminance.

Notes:

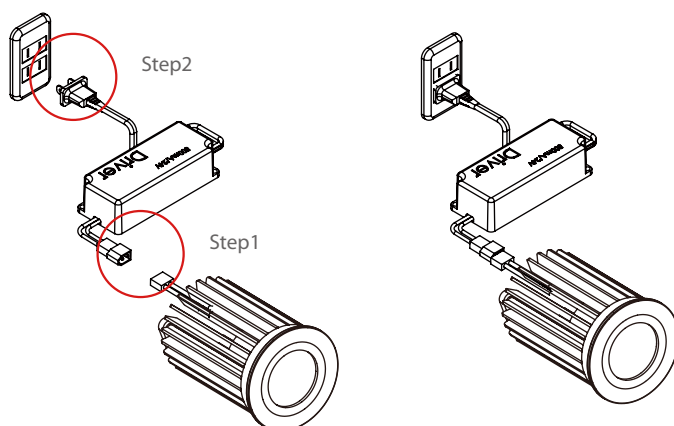
1. LED is a dynamic and constantly evolving technology. The final lux output of your MR16 may vary.
2. Angle has $\pm 5^\circ$ tolerance.

Assembly Instructions and Recommended Driver Specification

Input Voltage	Output Voltage	Operating Current (Constant)	Rated Power
AC 100~240V	DC18~22V	350mA	> 9W

Assembly Instructions:

1. Connect the 7W MR16 HR Module to the DC driver shown as step 1.
2. Plug the driver to AC outlet shown as step 2.



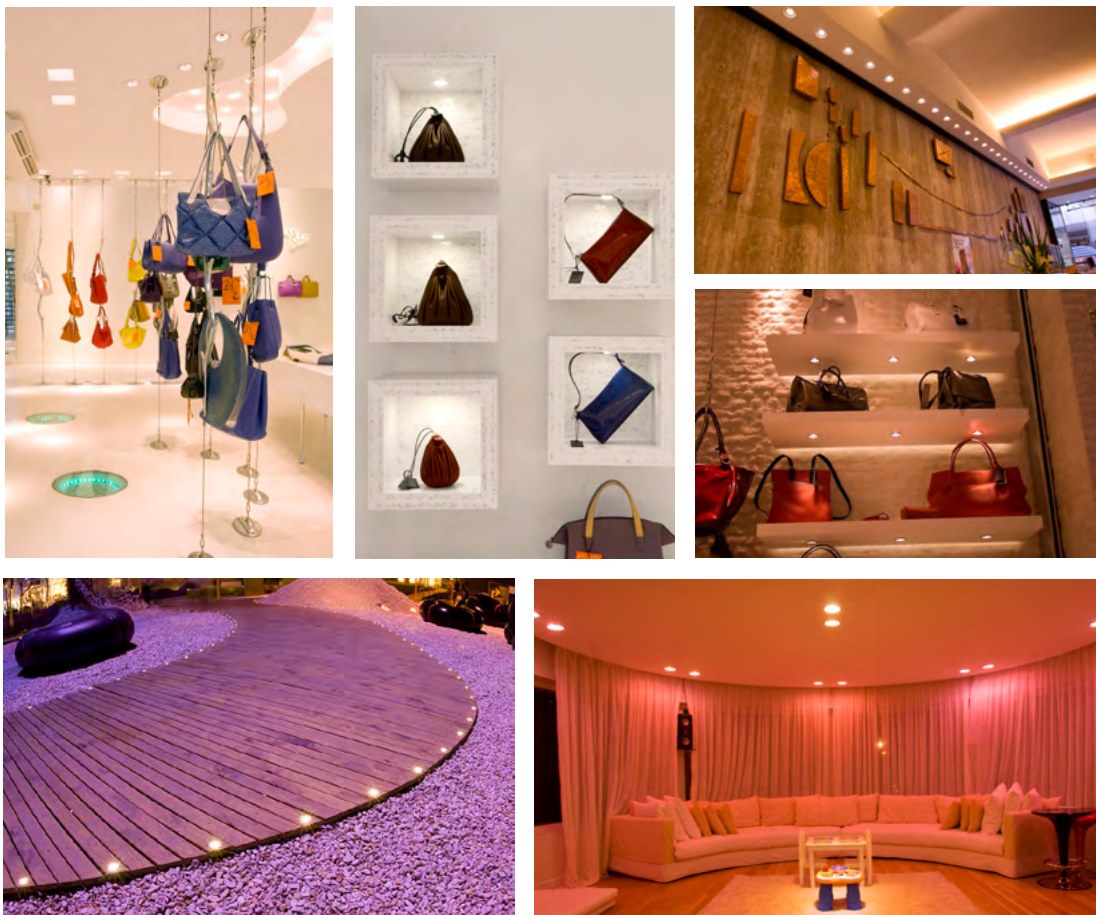
Caution:

Never plug the driver to AC outlet before the 7W MR16 HR Module is properly connected, otherwise it may damage the LEDs permanently.

7W MR16 HR Module Assembly Instructions.

Applications

Edison Opto 7W MR16 HR Module is compatible with traditional MR16 and more efficient. Meanwhile, it can be easily installed in lighting fixtures.



7W MR16 HR Module application pictures.

Environmentally Friendly

With the increasing demand for energy and the effect on global warming, Edison Opto plays a role in preserving the forest by reducing energy consumption, and CO₂ emission one step at a time.

Replacing traditional halogen lamp with Ediosn Opto 7W MR16 HR Module, one can help in reducing global warming by 245.9 kg of CO₂ annually.

7W MR16 HR Module VS 50W Halogen

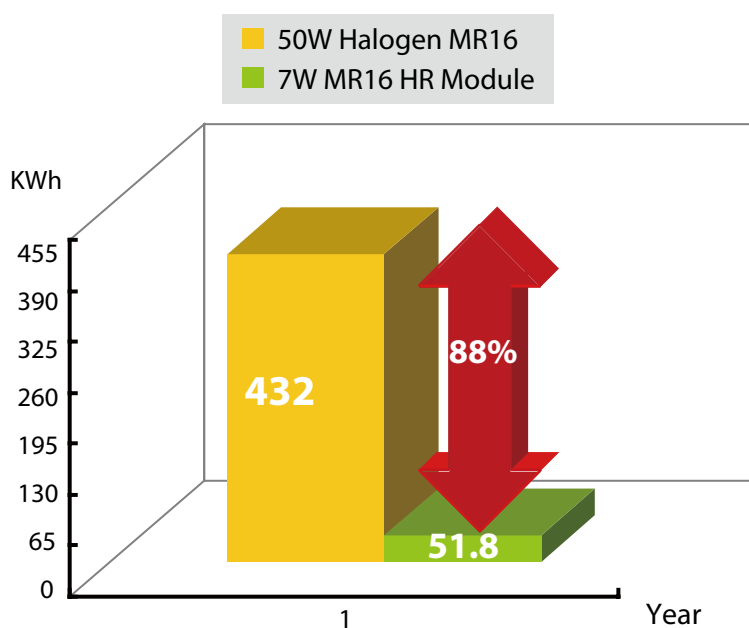
Power Reduction by 88%

=

Reduction of CO₂
emission by 245.9 kg

=

Saves 17.6 trees a year

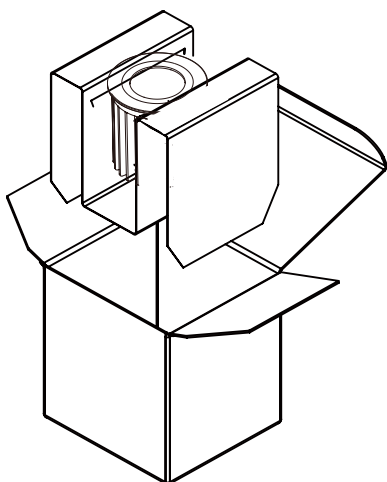


7W MR16 HR Module Environmentally Friendly.

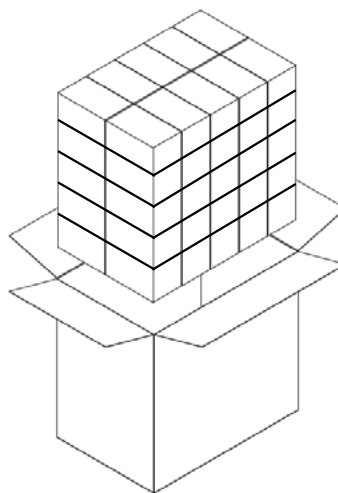
Note:

Calculation based on 24 hours of daily operation.

Package Information



1pc / Pack



50 Boxes / Carton

7W MR16 HR Module package.

Notes:

1. Pack Dimensions : 70mm(length)*70mm(width)*90mm(height)
2. Carton Dimensions : 530mm(length)*430mm(width)*195mm(height)

Revision History

Versions	Description	Release Date
1	Establish order code information	2013/04/08

About Edison Opto

Edison Opto is a leading manufacturer of high power LED and a solution provider experienced in LDMS. LDMS is an integrated program derived from the four essential technologies in LED lighting applications- Thermal Management, Electrical Scheme, Mechanical Refinement, Optical Optimization, to provide customer with various LED components and modules. More Information about the company and our products can be found at www.edison-opto.com

Copyright©2013 Edison Opto. All rights reserved. No part of publication may be reproduced or transmitted in any form or by any means, electronic or mechanical, including photo copy, recording or any other information storage and retrieval system, without prior permission in writing from the publisher. The information in this publication are subject to change without notice.

www.edison-opto.com

For general assistance please contact:
service@edison-opto.com.tw

For technical assistance please contact:
LED.Detective@edison-opto.com.tw